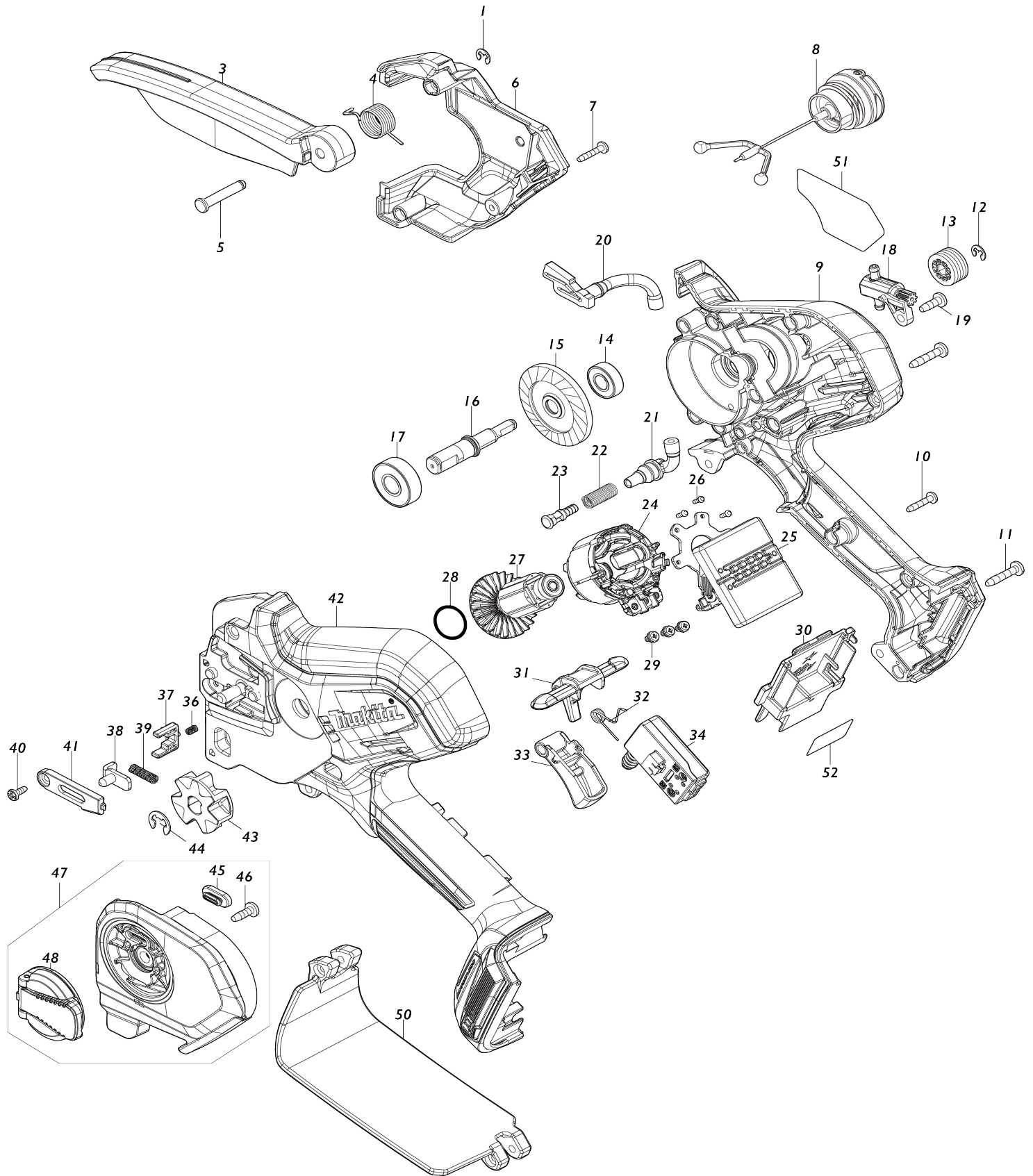


Model No.DUC101 100MM CORDLESS CHAIN SAW



Model No.DUC101 100MM CORDLESS CHAIN SAW

Item No.	Parts No.	Description	Interchangability	Q'ty	New/Old	Note1	Note2
001	961011-9	STOP RING E-4		1			
003	413M04-5	SAFETY COVER		1			
004	232785-2	TORSION SPRING 14		1			
005	256A31-5	SHOULDER PIN 5		1			
006	413L96-8	HOUSING R COVER		1			
007	266429-2	TAPPING SCREW 3X16		3			
008	126832-8	TANK CAP ASSEMBLY		1			
C10	213894-6	O-RING 25		1	*		
C11	213A11-4	O-RING 25	O	1			
009	183Y31-5	HOUSING SET		1			
C10	263005-3	RUBBER PIN 6		2			
C20	347A70-7	TANK GUARD		1			
009		INC. 42					
010	266429-2	TAPPING SCREW 3X16		10			
011	911138-5	P.H.SCREW M4X20 WITH WR		2			
012	961011-9	STOP RING E-4		1			
013	226884-0	WORM GEAR		1			
014	211166-3	BALL BEARING 698DDW		1			
015	227A17-6	SPIRAL BEVEL GEAR 53		1			
016	327A89-2	SPINDLE		1			
017	210059-1	BALL BEARING 6000DDW		1			
018	141N25-0	OIL PUMP COMPLETE		1			
019	266427-6	TAPPING SCREW 4X12		1			
020	422968-4	OIL TUBE 3-60		1			
021	422969-2	OIL TUBE 3-25		1			
022	232774-7	COMPRESSION SPRING 6		1			
023	413L02-3	NIPPLE		1			
024	629B92-8	STATOR		1			
025	620M06-6	CONTROLLER		1			
026	266490-9	TAPPING SCREW PT 2X6		3	*		
026-1	265C47-1	TAPPING SCREW PT 2X6	O	3			
027	619791-8	ROTOR		1			
028	213A05-9	O-RING16		1			
029	652069-6	FLAT HEAD SCREW M3X6		3			
030	643874-2	TERMINAL		1			
031	413L98-4	LOCK OFF LEVER		1			
032	232784-4	TORSION SPRING 6		1			
033	413L97-6	SWITCH LEVER		1			
034	650033-1	SWITCH C3XA-3PSPM-1		1			
036	233211-4	COMPRESSION SPRING 2		1			
037	413M02-9	STOPPER		1			
038	347A69-2	TENSION SLIDE		1			
039	232787-8	COMPRESSION SPRING 4		1			
040	266492-5	TAPPING SCREW 3X8		1			
041	413M03-7	COVER		1			
042	183Y31-5	HOUSING SET		1			
C10	263005-3	RUBBER PIN 6		2			

C20	347A70-7	TANK GUARD		1			
042		INC. 9					
043	227947-5	SPROCKET 7		1	*		
043-1	1911W5-9	SPROCKET 7 SET	O	1			
044	961013-5	STOP RING E-7		1			
045	422970-7	GROMMET		1			
046	266427-6	TAPPING SCREW 4X12		1	*		
047	136914-8	SPROCKET COVER ASS'Y		1	*		
047		INC. 45,46,48			*		
047-1	137203-4	SPROCKET COVER ASS'Y	<	1	*		
047-1		INC. 45,46,48			*		
047-2	137235-1	SPROCKET COVER ASS'Y	O	1			
047-2		INC. 45,48					
048	141M77-5	NUT COMPLETE		1	*		
048-1	1410X3-4	NUT COMPLETE	<	1	*		
048-2	1410G9-3	NUT COMPLETE	S	1			
050	141M76-7	REAR HAND GUARD COMPLETE		1			
C10	8062G7-3	CAUTION LABEL		1			
051	8584P7-4	DUC101 NAME PLATE		1			
052	8584R6-0	DUC101 SERIAL NO. LABEL		1			
053	8085Y3-1	INDICATION LABEL		1			
A01	1910W0-3	GUIDE BAR 4 SET		1	*		
A01-1	1910W0-3	GUIDE BAR 4 SET	O	1			
A02	198457-8	CHAIN EDGER SET		1	*		
A02-1	D-70948	FILE HOLDER SET 4.0MM(5/32")	O	1			
A03	199897-3	OIL VESSEL SET		1			
A04	413M40-1	GUIDE BAR CASE 125		1			
A05	1910V6-4	SAW CHAIN 4 SET		1			
A06	450128-8	BATTERY COVER		1			
A07	***DC18SD	DC18SD BATTERY CHARGER		1			
A07		COMPO-PARTS					
A08	197600-6	BATTERY BL1830B SET		1			
E01	807950-8	SOUND 95DB LABEL		1			

Please state Parts No. when your order.

Print Date 03/17/2025