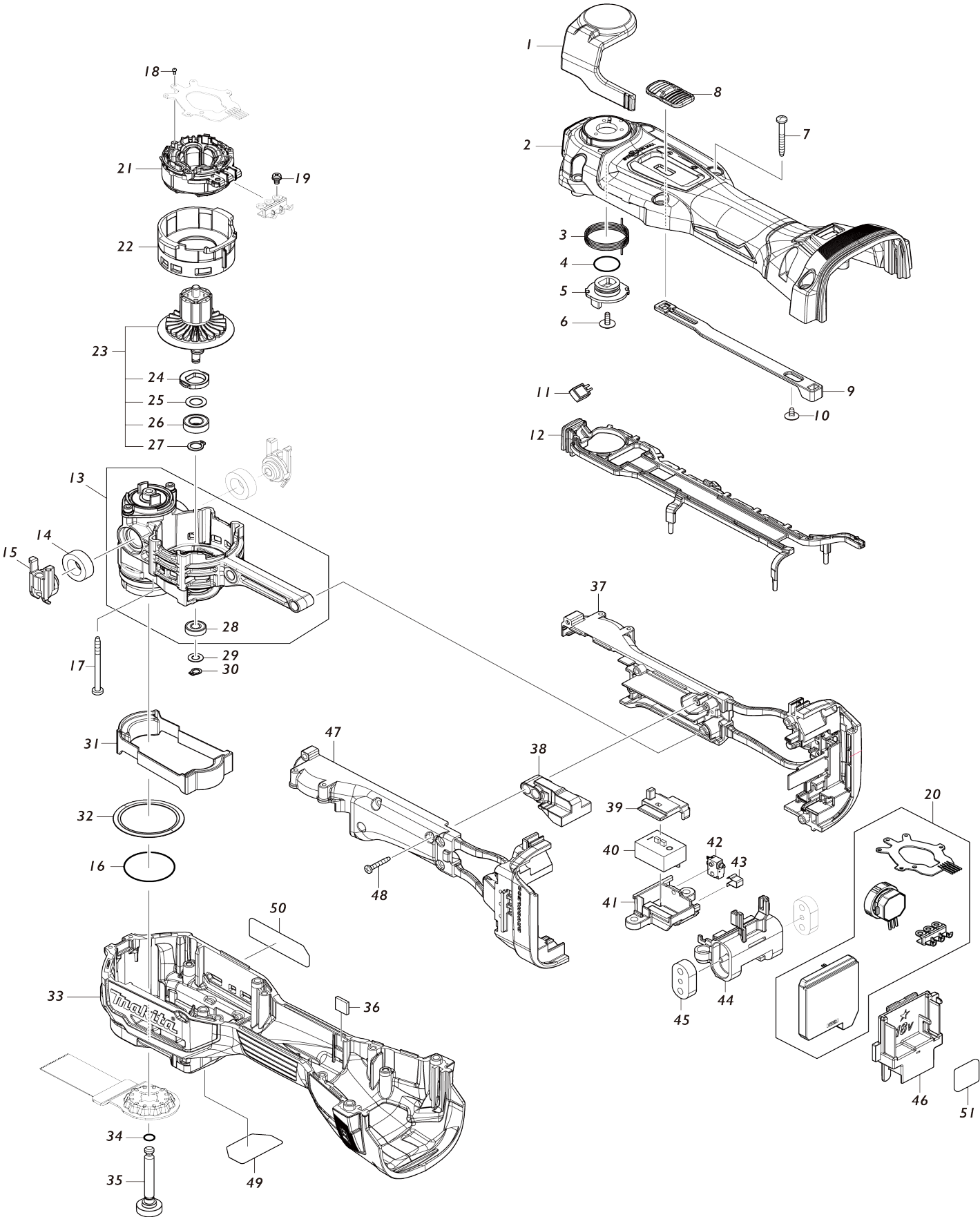


Model No.DTM52 CORDLESS MULTI TOOL



Model No.DTM52 CORDLESS MULTI TOOL

Item No.	Parts No.	Description	Interchangability	Q'ty	New/Old	Note1	Note2
006	266424-2	TAPPING SCREW 4X20		4	*		
009	266424-2	TAPPING SCREW 4X20		2	*		
011	213343-3	O RING 35		1	*		
014-1	210164-4	SPHERE BEARING 706	O	1			
017	211092-6	BALL BEARING 629DDW		1			
021	210023-2	BALL BEARING 627DDW		1			
038	620270-1	CONTROLLER		1	*		
047-1	143250-5	CRANK HOUSING COMPLETE	<	1			
048	266424-2	TAPPING SCREW 4X20		2	*		
052	266429-2	TAPPING SCREW 3X16		4	*		
001	140Y95-2	LEVER COMPLETE		1			
C10	263032-0	RUBBER PIN 4		1			
002	183S78-3	HOUSING SET		1			
002		INC. 33,36					
003	232680-6	TORSION SPRING 25		1			
004	213070-2	O RING 10		1			
005	313364-6	DRIVER B		1	*		
005-1	313517-7	DRIVER B	S	1			
006	265B82-3	P.H.SCREW M3X10 WITH WR		1			
007	266351-3	TAPPING SCREW 4X35		8	*		
007-1	265B69-5	TAPPING SCREW 4X35	O	8			
008	413395-6	SWITCH KNOB		1	*		
008-1	413G34-0	SWITCH KNOB	<	1			
009	413396-4	SWITCH LEVER A		1			
010	265B81-5	TAPPING SCREW FLANGE 3X6		1			
011	620E79-1	LED CIRCUIT		1			
012	413400-9	LED GUIDE		1			
013	136394-8	CRANK HOUSING ASSY		1	*		
013		INC. 28			*		
013-1	136529-1	CRANK HOUSING ASS'Y	<	1	*		
C10	224616-9	FLANGE 10		1	*		
C20	216055-7	THRUST NEEDLE CAGE 1024		1	*		
C30	216054-9	WASHER 1024		2	*		
C40	210150-5	BALL BEARING 6803DDW		1	*		
C50	313416-3	DRIVER A		1	*		
C60	265B79-2	H.S.H.BOLT M5X14 WITH GM		1	*		
013-1		INC. 28			*		
013-2	137120-8	CRANK HOUSING ASS'Y	S	1			
C10	224616-9	FLANGE 10		1			
C20	216055-7	THRUST NEEDLE CAGE 1024		1			
C30	216054-9	WASHER 1024		2	*		
C31	253617-0	FLAT WASHER 10	O	1			
C40	210150-5	BALL BEARING 6803DDW		1			
C51	313516-9	DRIVER A	S	1			
C60	265B79-2	H.S.H.BOLT M5X14 WITH GM		1			
013-2		INC. 28					
014	422677-5	CUSHION F		2	*		

014-1	422677-5	CUSHION F	O	2			
015	413401-7	CUSSION SUPPORT F		2			
016	213497-6	O-RING 31.5		1			
017	266327-0	TAPPING SCREW 3X40		4	*		
017-1	266327-0	TAPPING SCREW 3X40	O	4			
018	266490-9	TAPPING SCREW PT 2X6		3	*		
018-1	265C47-1	TAPPING SCREW PT 2X6	O	3			
019	652069-6	FLAT HEAD SCREW M3X6		3			
020	620E78-3	CONTROLLER		1			
021	629A56-6	STATOR		1			
022	413394-8	MOTOR HOUSING		1			
023	519683-0	ROTOR ASSY		1			
C10	210248-8	BALL BEARING 6901DDW		1			
C20	253492-4	FLAT WASHER 21		1			
023		INC. 24-27					
024	313361-2	BALANCER		1			
025	253777-8	FLAT WASHER 8		1			
026	210249-6	BALL BEARING 688LLU		1			
027	961004-6	RETAINING RING (EXT) S-8		1			
028	210039-7	BALL BEARING 695DDW		1	*		
028-1	210281-0	BALL BEARING 695 DDW	O	1			
029	253811-4	FLAT WASHER 5		1			
030	961008-8	RETAINING RING S-5		1			
031	422721-8	CAP		1			
032	422682-2	RUBBER RING 35		1	*		
032-1	422B02-2	RUBBER RING 35	<	1			
033	183S78-3	HOUSING SET		1			
033		INC. 2,36					
034	213032-0	O RING 4		1			
035	327769-4	HOLDER BOLT		1			
036	422679-1	CUSHION M		2			
037	183S69-4	INNER HOUSING SET		1	*		
037		INC. 47			*		
037-1	183Y76-3	INNER HOUSING SET	<	1			
037-1		INC. 47					
038	313365-4	WEIGHT		1			
039	413397-2	SWITCH LEVER B		1			
040	650000-6	SWITCH BSW-1125A-17		1			
041	413398-0	SWITCH BASE		1	*		
041-1	413G11-2	SWITCH BASE	<	1			
042	632S34-5	SWITCH UNIT		1			
043	232706-4	LEAF SPRING		1			
044	413399-8	SWITCH COVER		1			
045	422678-3	CUSHION R		2			
046	643874-2	TERMINAL		1			
047	183S69-4	INNER HOUSING SET		1	*		
047		INC. 37			*		
047-1	183Y76-3	INNER HOUSING SET	<	1			
047-1		INC. 37					
048	265935-4	TAPPING SCREW 3X20		8	*		
048-1	251497-8	TAPPING SCREW 3X20	<	8			
049	8032F3-5	INDICATION LABEL		1			

050	811E24-9	DTM52 NAME PLATE		1			
051	811E32-0	DTM52 SERIAL NO. LABEL		1			
A01	191R02-6	DUST ATTACHMENT SET		1			
A02	***DC18RC	DC18RC FAST CHARGER		1			
A02		COMPO-PARTS					
A03B	450128-8	BATTERY COVER		1			
A04	197280-8	BATTERY BL1850B SET		1			
A05	821551-8	CONNECTOR PLASTIC CASE (TYP E3)		1			
C10	453974-8	LATCH		4			
A06	835W93-4	INNER TRAY		1			
A07B	8032N3-1	DTM52RTJX1 INDICATION LABEL		1			
A07C	8032P4-3	DTM52T1JX2 INDICATION LABEL		1			
A08B	8032N4-9	DTM52RTJX1 PLASTIC CASE LABEL		2			
A08C	8032P5-1	DTM52T1JX2 PLASTIC CASE LABEL		2			
A09	821852-4	TOOL BOX		1			
C10	413608-5	SLIDE LATCH		1			
A10	B-64814	STARLOCK CUTSAW 32 TMA047 BIM		1			
A11	B-64799	STARLOCK SEGMENTSAW 85 TMA045		1			
A12B	B-64939	STARLOCK CUTSAW 32 TMA059 BIM		1			
A12C	B-64836	STARLOCK SEGMENTSAW 85 TMA049		1			
A13B	B-66400	BOW SHAPE PLUNGE CUT SAWBLADE		1			
A13C	B-64917	STARLOCK CUTSAW 10 TMA057 BIM		1	*		
A13-1 C	B-64917	STARLOCK CUTSAW 10 TMA057 BIM	O	1			
A14B	B-21624	ABRASIVEPAPER DELTA RED 60		1			
A14C	B-64923	STARLOCK CUTSAW 20 TMA058 BIM		1	*		
A14-1 C	B-64923	STARLOCK CUTSAW 20 TMA058 BIM	O	1			
A15B	B-22947	ABRASIVEPAPER DELTA RED 100		1			
A15C	B-64939	STARLOCK CUTSAW 32 TMA059 BIM		1			
A16B	B-22953	ABRASIVEPAPER DELTA RED 150		1			
A16C	B-64995	STARLOCK SCRAPERFLEXIBLE TMA66		1			
A17B	B-65115	STARLOCK SANDING PAD 93 TMA078		1			
A17C	B-65028	STARLOCK SEGMENTSAW 85 TMA069		1			
A18C	B-65040	STARLOCK SEGMENTSAW 70 TMA071		1			
A19C	B-66400	BOW SHAPE PLUNGE CUT SAWBLADE		1			
A20C	B-66416	BOW SHAPE PLUNGE CUT SAWBLADE		1			
A21C	B-66472	JOINT CUTTER BLADE/ SEALING		1			
A22C	B-22953	ABRASIVEPAPER DELTA RED 150		1			
A23C	B-65115	STARLOCK SANDING PAD 93 TM		1			

		A078					
F01	191R02-6	DUST ATTACHMENT SET		1			

Please state Parts No. when your order.

Print Date 01/27/2025