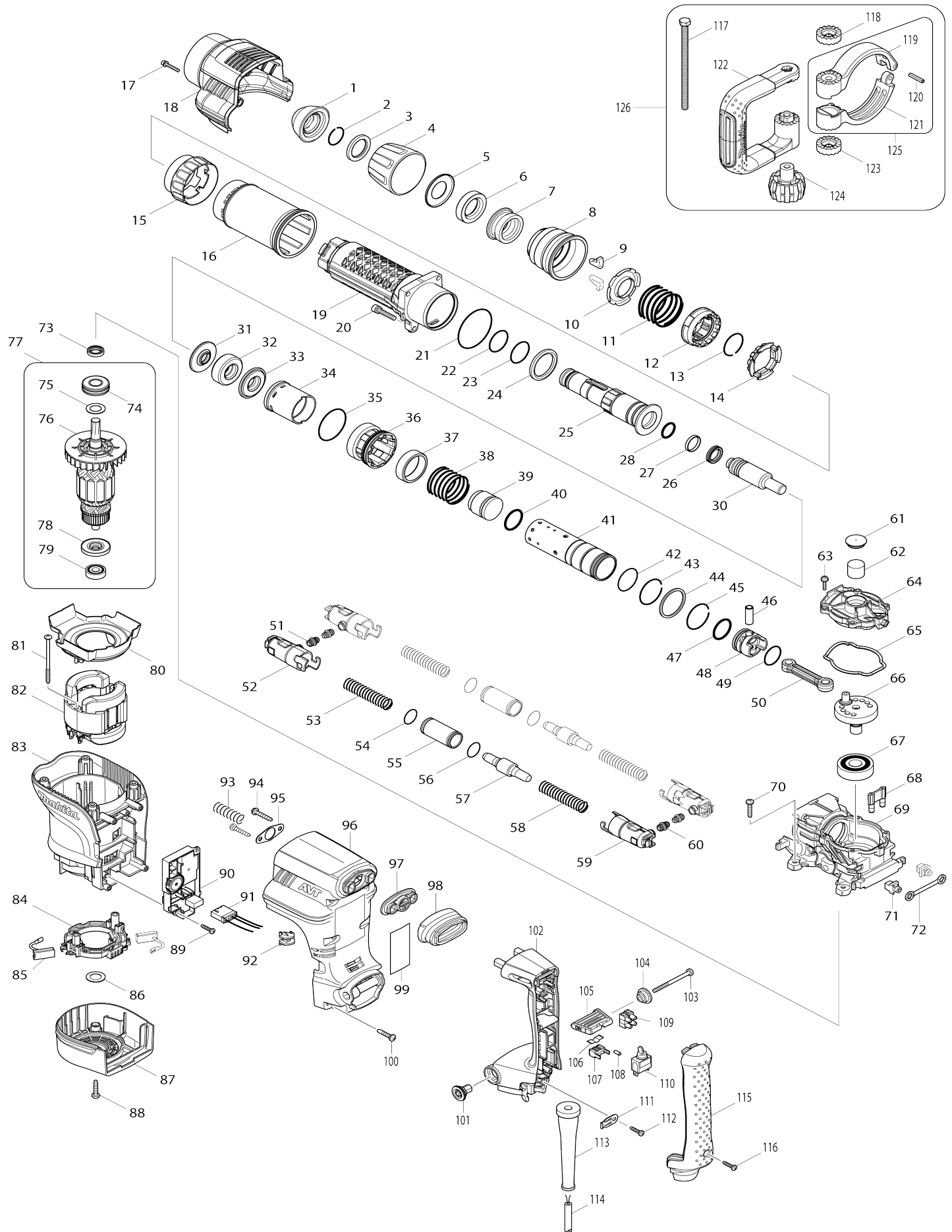


Model No.HM1111C DEMOLITION HAMMER



Model No.HM1111C DEMOLITION HAMMER

Item No.	Parts No.	Description	Interchangability	Q'ty	New/Old	Note1	Note2
001	286285-4	TOOL HOLDER CAP		1			
002	233948-3	RING SPRING 25		1			
003	257308-5	RING 28		1			
004	450064-8	CHUCK COVER		1			
005	346247-5	CUP WASHER 28		1			
006	262161-6	RUBBER RING 28		1			
007	324752-2	CHUCK RING		1			
008	451836-4	RELEASE COVER		1			
009	310178-4	TOOL RETAINER		2			
010	345804-6	SPRING GUIDE		1			
011	234180-2	COMPRESSION SPRING 47		1			
012	313193-7	CHANGE RING		1			
013	233982-3	RING SPRING 33		1			
014	325904-8	LOCK RING		1			
015	451842-9	CHANGE RING COVER		1			
016	451835-6	BARREL COVER		1			
017	922148-7	HEX. SOCKET HEAD BOLT M4X25		1			
018	451845-3	CRANK HOUSING COVER		1			
019	140411-8	BARREL COMPLETE		1			
020	922353-6	HEX.SOCKET HEAD BOLT M6X30		4			
021	213654-6	O RING 60		1			
022	213492-6	O-RING 32		1			
023	213492-6	O-RING 32		1			
024	262135-7	RUBBER RING 36		1			
025	325901-4	TOOL HOLDER		1			
026	213281-9	X-RING 18		1			
027	213392-0	FLUORIDE RING 25		1			
028	213317-4	O RING 20		1			
030	325902-2	IMPACT BOLT		1			
031	325903-0	COLLARED SLEEVE 19		1			
032	422053-3	RUBBER RING 20		1			
033	325903-0	COLLARED SLEEVE 19		1			
034	412096-3	SLIDE SLEEVE		1			
035	213606-7	O RING 48		1			
036	318604-7	CYLINDER GUIDE		1			
037	313194-5	RING 39		1			
038	234178-9	COMPRESSION SPRING 40		1			
039	325905-6	STRIKER		1			
040	213536-2	O-RING 27		1			
041	331892-9	CYLINDER 35		1			
042	213458-6	O RING 34		1			
043	233981-5	RING SPRING 38		1			
044	267423-7	FLAT WASHER 40		1			
045	233981-5	RING SPRING 38		1			
046	331911-1	PIPE 10		1			
047	213536-2	O-RING 27		1			
048	451833-0	PISTON		1			

049	213415-4	O RING 28		1			
050	451834-8	CONNECTING ROD		1			
051	422054-1	RUBBER PIPE		2			
052	451843-7	FRONT PIPE HOLDER		2			
053	234179-7	COMPRESSION SPRING 14		2			
054	213961-7	O RING 22		2			
055	331893-7	PIPE 20		2			
056	213961-7	O RING 22		2			
057	325906-4	COUNTER WEIGHT		2			
058	234179-7	COMPRESSION SPRING 14		2			
059	451844-5	REAR PIPE HOLDER		2			
060	422054-1	RUBBER PIPE		2			
061	424311-3	FILTER CAP		1			
062	443127-7	FILTER		1			
063	911133-5	PAN HEAD SCREW M4X18		5			
064	451838-0	CRANK CAP		1			
065	424312-1	SEAL RING		1			
066	325899-5	CRANK SHAFT		1			
067	211279-0	BALL BEARING 6303LLU		1			
068	451848-7	AIR PIPE		1			
069	140407-9	CRANK HOUSING COMPLETE		1			
070	266041-8	TAPPING SCREW 5X25		4			
071	419008-7	FIX GUIDE		2			
072	423345-3	CUSHION PLATE		1			
073	213133-4	OIL SEAL 12		1			
074	211295-2	BALL BEARING 6202LLU		1			
075	267215-4	FLAT WASHER 15		1			
076	241908-1	FAN 80		1			
077	517858-5	ARMATURE ASSEMBLY 220-240V		1			
077		INC. 74-76,78,79					
078	681642-5	INSULATION WASHER		1			
079	210059-1	BALL BEARING 6000DDW		1			
080	451837-2	BAFFLE PLATE		1			
081	266568-8	TAPPING SCREW 5X80		2			
082	623418-4	FIELD 220-240V		1			
083	451840-3	MOTOR HOUSING		1			
084	638700-8	BRUSH HOLDER UNIT		1			
085	194412-8	CARBON BRUSH CB-171		1	*		
085-1	195844-2	CARBON BRUSH CB-175	O	1			
086	267215-4	FLAT WASHER 15		1			
087	451839-8	REAR COVER		1			
088	266041-8	TAPPING SCREW 5X25		2			
089	265995-6	TAPPING SCREW 4X18		2	*		
089-1	266300-0	TAPPING SCREW 4X18	<	2			
090	631968-5	CONTROLLER		1			
091	638718-9	LEAD UNIT		1			
092	450240-4	LENS		1			
093	233434-4	COMPRESSION SPRING 11		1			
094	266173-1	TAPPING SCREW 5X30		2			
095	346246-7	PLATE		1			
096	451846-1	HANDLE BASE		1			
097	419783-5	DUST COVER SUPPORT		1			

098	424001-8	DUST COVER		1			
099	868068-0	HM1111C NAME PLATE		1	*		
099-1	858520-0	HM1111C NAME PLATE	O	1			
100	266041-8	TAPPING SCREW 5X25		6			
101	451431-0	HANDLE RETAINER		1			
102	140409-5	HANDLE COMPLETE		1			
C10	423379-6	SPONGE SHEET		1			
103	266029-8	TAPPING SCREW 5X65		1			
104	450352-3	SHOULDER SLEEVE 6		1			
105	450896-3	SLIDE LEVER		1			
106	232209-8	LEAF SPRING		1			
107	450891-3	LEVER STOPPER		1			
108	263027-3	RUBBER PIN 4		1			
109	654531-7	TERMINAL BLOCK 2P		1			
110	651418-4	SWITCH ST115A-40		1	*		
110-1	651418-4	SWITCH ST115A-40	O	1			
111	687169-3	STRAIN RELIEF		1			
112	265995-6	TAPPING SCREW 4X18		1			
113	682560-0	CORD GUARD 10		1			
114	695123-3	POWER SUPPLY CORD 1.5-2-4.0		1			
115	451841-1	HANDLE COVER		1			
116	265995-6	TAPPING SCREW 4X18		1			
117	265439-6	HEX. BOLT M8X150		1			
118	417002-3	SIDE HANDLE CAM		1			
119	317282-0	SIDE HANDLE BASE 68A		1			
120	951166-8	SPRING PIN 5-24		1			
121	317283-8	SIDE HANDLE BASE 68B		1			
122	417003-1	SIDE HANDLE		1			
123	417002-3	SIDE HANDLE CAM		1			
124	252640-2	WING NUT M8		1			
125	151769-0	SIDE HANDLE 68 COMPLETE		1			
125		INC. 119-121					
126	134890-0	SIDE HANDLE 68 ASS'Y		1			
126		INC. 117-124					
A01	A-80787	BULL POINT 280 SDS-MAX		1	*		
A01-1	D-34176	BULL POINT FOR SDS-MAX 300	O	1			
A02	194683-7	GREASE VESSEL SET		1	*		
A02-1	198993-4	GREASE VESSEL SET	<	1			
A03	443122-7	CLOTH		1	*		
A04	140561-9	PLASTIC CASE COMPLETE		1	*		
C10	162271-8	LATCH		2	*		
C20	325637-5	SHAFT		1	*		
C30	450990-1	HANDLE		1	*		
C40	837160-3	SPONGE 40-65		1	*		
A04-1	140562-7	PLASTIC CASE COMPLETE	O	1			
C10	162271-8	LATCH		2			
C20	325637-5	SHAFT		1			
C30	450990-1	HANDLE		1			
C40	837160-3	SPONGE 40-65		1			
A05	819925-5	HM1111C PLASTIC CASE LABEL		2			
B01	195260-8	HAMMER SERVICE KIT		1			

C10	181490-7	HAMMER GREASE 30G		1	*		
C11	1914C5-7	GREASE SET	O	1			
B01		INC. 1,2,9,26,27,28,32,40,47					
B01		INC. 49,85					
E03	809304-5	SOUND 97DB LABEL		1	*		
E03-1	801092-0	SOUND 101DB LABEL	<	1			
F03-1	199143-4	DUST EXTRACTOR ATT SET(EU)	<	1			
F04-1	199143-4	DUST EXTRACTOR ATT SET(EU)	<	1			
F06-1	199144-2	DUST EXTRACTOR ATT SET(EU)	<	1			
C10	417765-1	FRONT CUFF 22		1			
C20	417766-9	FRONT CUFF 38		1			
C30	415021-3	HOSE JOINT		1			
F07-1	199144-2	DUST EXTRACTOR ATT SET(EU)	<	1			
C10	417765-1	FRONT CUFF 22		1			
C20	417766-9	FRONT CUFF 38		1			
C30	415021-3	HOSE JOINT		1			
F27	1914C6-5	GREASE SET		1			

Please state Parts No. when your order.

Print Date 12/02/2024