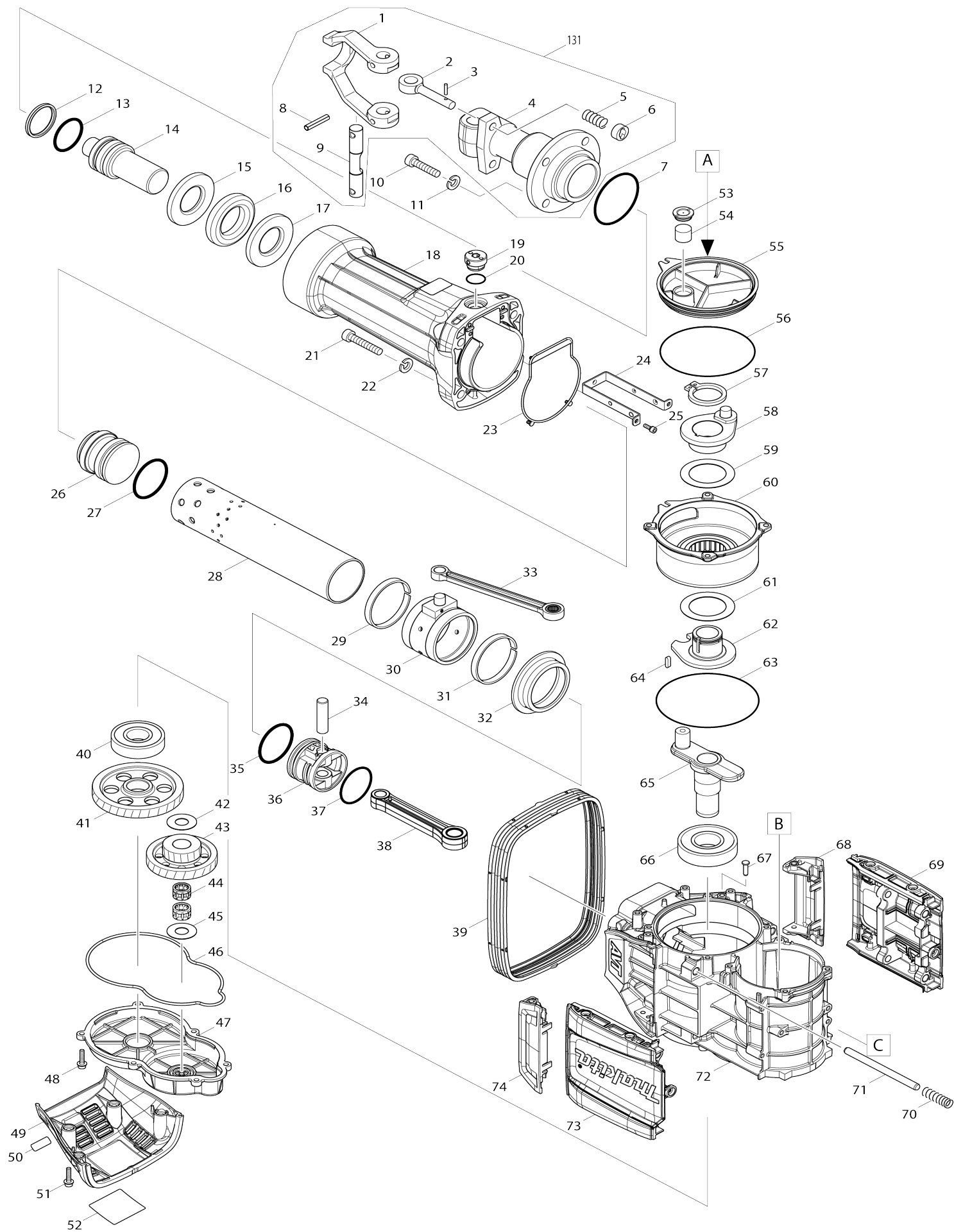
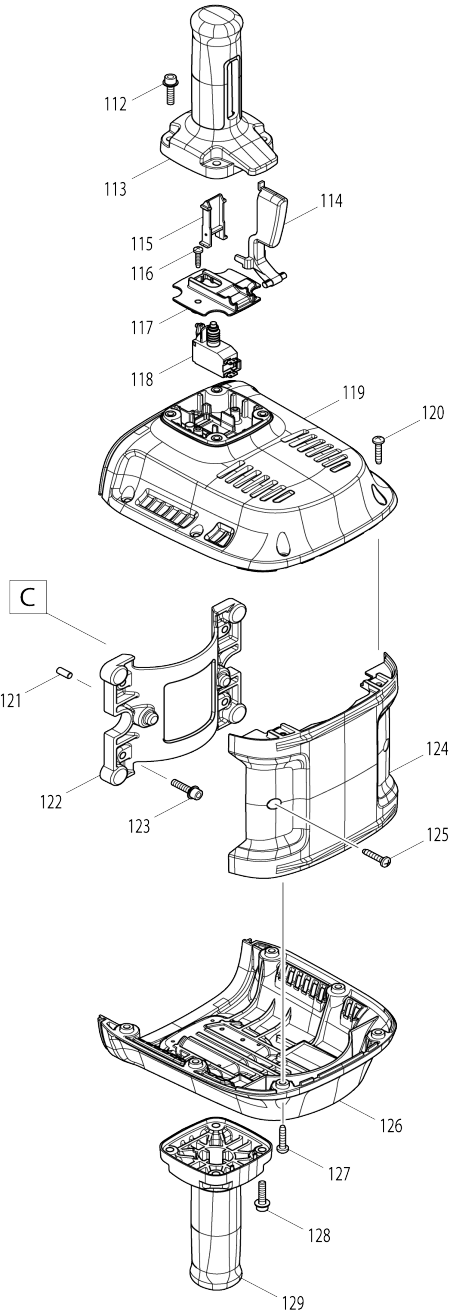
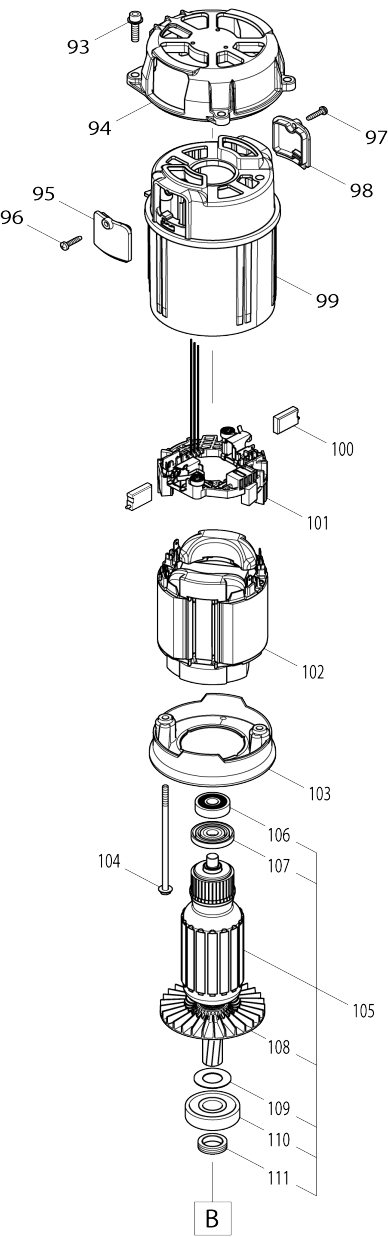
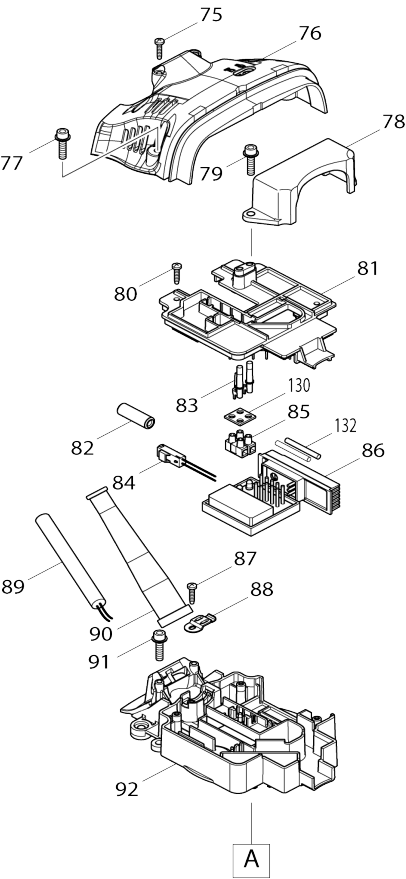


Model No.HM1812 ELECTRIC BREAKER



Model No.HM1812 ELECTRIC BREAKER



Model No.HM1812 ELECTRIC BREAKER

Item No.	Parts No.	Description	Interchangability	Q'ty	New/Old	Note1	Note2
001	324236-0	TOOL RETAINER		1			
002	322477-2	TOOL RETAINER POLE		2			
003	256219-1	PIN 4		2			
004	310616-6	TOOL HOLDER 29		1			
005	233083-7	COMPRESSION SPRING 12		2			
006	322560-5	RETAINER RING		2			
007	213757-6	O RING 80		1			
008	951272-9	SPRING PIN 8-40		2	*		
008-1	258071-3	SPRING PIN 8-40	O	2			
009	324238-6	TOOL RETAINER SHAFT		1			
010	265989-1	HEX. SOCKET BOLT M12X45		4			
011	942301-9	SPRING WASHER 12		4			
012	213797-4	X-RING 47		1			
013	213798-2	O-RING 47		1			
014	326469-3	IMPACT BOLT		1			
015	332127-1	WASHER 42		1			
016	262174-7	RUBBER RING 47		1			
017	332127-1	WASHER 42		1			
018	319218-5	BARREL		1			
019	450347-6	CAP		1			
020	213953-6	O RING 24		1			
021	922677-0	HEX. SOCKET BOLT M12X55		4			
022	942301-9	SPRING WASHER 12		4			
023	424666-6	SEAL RING A		1			
024	346840-5	PLATE		1			
025	266086-6	HEX. SOCKET HEAD BOLT M5X16		2	*		
025-1	266071-9	HEX. SOCKET HEAD BOLT M5X16	O	2			
026	326470-8	STRIKER		1			
027	213799-0	O-RING 56		1			
028	332130-2	CYLINDER LINER 66		1			
029	455492-2	SPACER 72		1			
030	123361-2	BALANCER ASSEMBLY		1			
030		INC. 29,31					
031	455492-2	SPACER 72		1			
032	332131-0	SPACER		1			
033	142922-9	CONNECTING ROD COMPLETE		1			
034	268328-4	PIN 15 C		1			
035	213799-0	O-RING 56		1			
036	455509-1	PISTON		1			
037	213662-7	O RING 55		1			
038	455490-6	CONNECTING ROD		1			
039	424669-0	BELLOWS		1			
040	211151-6	BALL BEARING 6306LLB		1			
041	227797-8	HELICAL GEAR 57		1			
042	267290-0	FLAT WASHER 18		1			
043	226834-5	GEAR COMPLETE 23-59		1			
044	212099-5	NEEDLE CAGE 1816		2			

045	267290-0	FLAT WASHER 18		1		
046	424667-4	SEAL RING B		1		
047	455491-4	GEAR COVER		1		
048	266923-4	H.S.HEAD BOLT M6X25 WITH GM		6		
049	455500-9	SIDE COVER B		1		
050	850X57-3	HM1812 SERIAL NO. LABEL		1		
051	266923-4	H.S.HEAD BOLT M6X25 WITH GM		4		
052	850T96-9	HM1812 NAME PLATE		1		
053	424668-2	FILTER CAP		1		
054	443127-7	FILTER		1		
055	455493-0	STOPPER		1		
056	213810-8	O-RING 124		1		
057	961156-3	RETAINING RING S-40		1		
058	142921-1	CRANK COMPLETE		1		
059	267486-3	FLAT WASHER 50		1		
060	142952-0	CRANK BOX COMPLETE		1		
061	267486-3	FLAT WASHER 50		1		
062	310619-0	COUNTER SHAFT		1		
063	213902-3	O RING 135		1		
064	254220-0	KEY 5		1		
065	310618-2	CRANK SHAFT		1		
066	211500-7	BALL BEARING 6307LLU		1		
067	256559-7	FLAT FILLISTER HD PIN 6		4		
068	455506-7	HANDLE C		1		
069	455503-3	CENTER COVER		1		
070	234349-8	COMPRESSION SPRING 12A		4		
071	326471-6	ROD 10		4		
072	142919-8	CRANK HOUSING COMPLETE		1		
073	455503-3	CENTER COVER		1		
074	455506-7	HANDLE C		1		
075	265995-6	TAPPING SCREW 4X18		2		
076	455499-8	SIDE COVER A		1		
077	266923-4	H.S.HEAD BOLT M6X25 WITH GM		4		
078	455510-6	BRACKET		1		
079	266923-4	H.S.HEAD BOLT M6X25 WITH GM		2		
080	265995-6	TAPPING SCREW 4X18		3		
081	455495-6	CAP COVER		1		
082	688165-4	LINE FILTER		2		
083	455514-8	LENS		1		
084	632E02-4	LEAD UNIT		1		
085	654531-7	TERMINAL BLOCK 2P		1		
086	620365-0	CONTROLLER		1		
087	265995-6	TAPPING SCREW 4X18		1		
088	687169-3	STRAIN RELIEF		1		
089	695123-3	POWER SUPPLY CORD 1.5-2-4.0		1		
090	682560-0	CORD GUARD 10		1		
091	266923-4	H.S.HEAD BOLT M6X25 WITH GM		2		
092	455494-8	CRANK HOUSING CAP		1		
093	266923-4	H.S.HEAD BOLT M6X25 WITH GM		4		
094	319220-8	BEARING BOX		1		
095	455498-0	BRUSH HOLDER COVER		1		
096	265995-6	TAPPING SCREW 4X18		1		

097	265995-6	TAPPING SCREW 4X18		1			
098	455498-0	BRUSH HOLDER COVER		1			
099	455496-4	MOTOR HOUSING		1			
100	197129-2	CARBON BRUSH CB-218		1			
101	632E01-6	BRUSH HOLDER UNIT		1	*		
101-1	632L58-9	BRUSH HOLDER UNIT	<	1			
102	636409-6	FIELD 240V		1			
103	455497-2	BAFFLE PLATE		1			
104	266922-6	+ HEX. BOLT M5X120 WITH GM		2			
105	517914-1	ARMATURE ASS'Y 240V		1			
105		INC. 106-111					
106	211087-9	BALL BEARING 6200DDW		1			
107	681630-2	INSULATION WASHER		1			
108	240156-9	FAN 90		1			
109	267487-1	FLAT WASHER 17		1			
110	211152-4	BALL BEARING 6303LLU		1			
111	332129-7	SEALING SCREW		1			
112	266923-4	H.S.HEAD BOLT M6X25 WITH GM		4			
113	455504-1	HANDLE A		1			
114	455508-3	SWITCH LEVER		1			
115	455511-4	SWITCH GUIDE		1			
116	265995-6	TAPPING SCREW 4X18		1			
117	455507-5	SWITCH COVER		1			
118	650738-3	SWITCH C3JW-C-P		1			
119	455502-5	HANDLE BASE A		1			
120	266041-8	TAPPING SCREW 5X25		6			
121	256269-6	PIN 6		2			
122	319222-4	BASE		1			
123	266923-4	H.S.HEAD BOLT M6X25 WITH GM		4			
124	455501-7	HEAD COVER		1			
125	266041-8	TAPPING SCREW 5X25		2			
126	455512-2	HANDLE BASE B		1			
127	266041-8	TAPPING SCREW 5X25		6			
128	266923-4	H.S.HEAD BOLT M6X25 WITH GM		4			
129	455505-9	HANDLE B		1			
130	685756-2	RUBBER SHEET		1			
131	135669-2	TOOL HOLDER ASS'Y		1			
131		INC. 1-6,8,9					
132	684970-7	GLASS CLOTH TUBE 3.5-45		2	*		
132-1	684670-9	VARNISHED POLYESTER TUBE	O	2			
A01	783203-8	HEX. WRENCH 5		1			
A02	B-10372	28.6MM HEX SELF SHARPENING		1			
B01	197127-6	HAMMER SERVICE KIT		1			
C10	181490-7	HAMMER GREASE 30G		5	*		
C11	1914C5-7	GREASE SET	O	5			
B01		INC. 12,13,27,35,100					
E01	801S81-9	SOUND 110DB LABEL		1	*		
E01-1	801S45-3	SOUND 108DB LABEL	<	1			
F01	197148-8	DUST EXTRACTOR ATTACHMENT SET		1			
F02	197168-2	DUST EXTRACTOR ATTACHMENT SET		1			

Please state Parts No. when your order.

Print Date 30/12/2024